

Trolley Song

Arranged for Accordion Orchestra by Al Terzo

A

12

Musical staff for section A, measures 12-16. It begins with a double bar line and a measure rest for 12 measures. The notation consists of quarter notes with stems pointing up, alternating between G4 and A4 in the key of D major.

17

Musical staff for section A, measures 17-22. It continues the pattern of quarter notes with stems pointing up, alternating between G4 and A4.

23

Musical staff for section A, measures 23-28. It continues the pattern of quarter notes with stems pointing up, alternating between G4 and A4.

B

29

Musical staff for section B, measures 29-34. It continues the pattern of quarter notes with stems pointing up, alternating between G4 and A4.

35

Musical staff for section B, measures 35-40. It continues the pattern of quarter notes with stems pointing up, alternating between G4 and A4.

41

Musical staff for section B, measures 41-46. It continues the pattern of quarter notes with stems pointing up, alternating between G4 and A4.

C

47

Musical staff for section C, measures 47-52. It continues the pattern of quarter notes with stems pointing up, alternating between G4 and A4.

53

Musical staff for section C, measures 53-58. It continues the pattern of quarter notes with stems pointing up, alternating between G4 and A4.

59

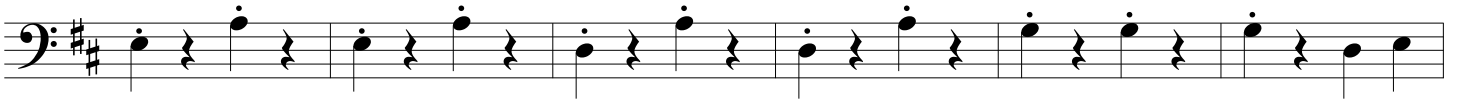
Musical staff for section C, measures 59-64. It continues the pattern of quarter notes with stems pointing up, alternating between G4 and A4.

D

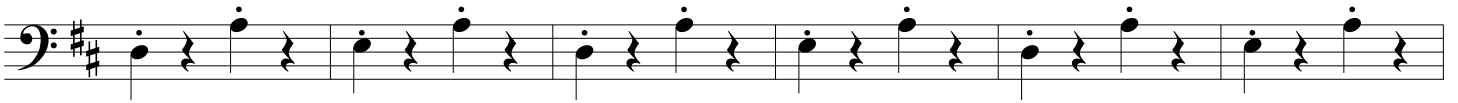
Musical staff for section D, measures 65-70. It continues the pattern of quarter notes with stems pointing up, alternating between G4 and A4.

Trolley Song - Bass

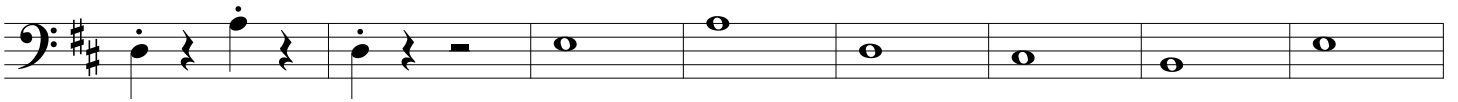
71



77

**E**

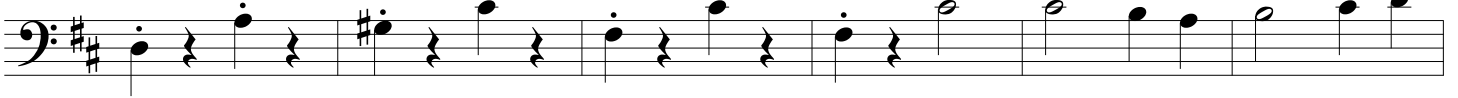
89

**F**

97



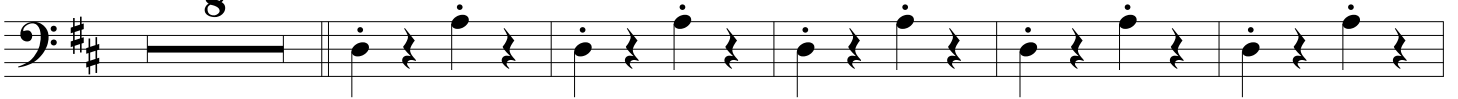
103



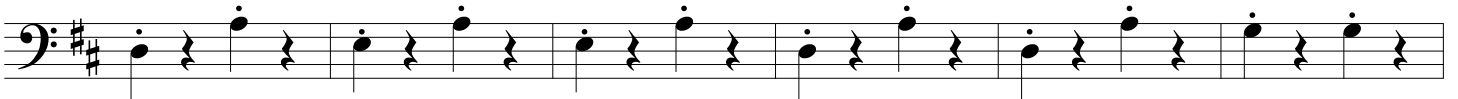
109

**G**

115



128



134



140

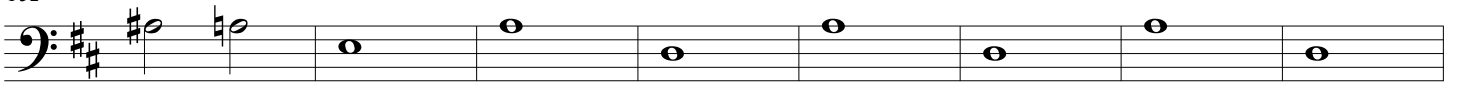


Trolley Song - Bass

146



152



160

